

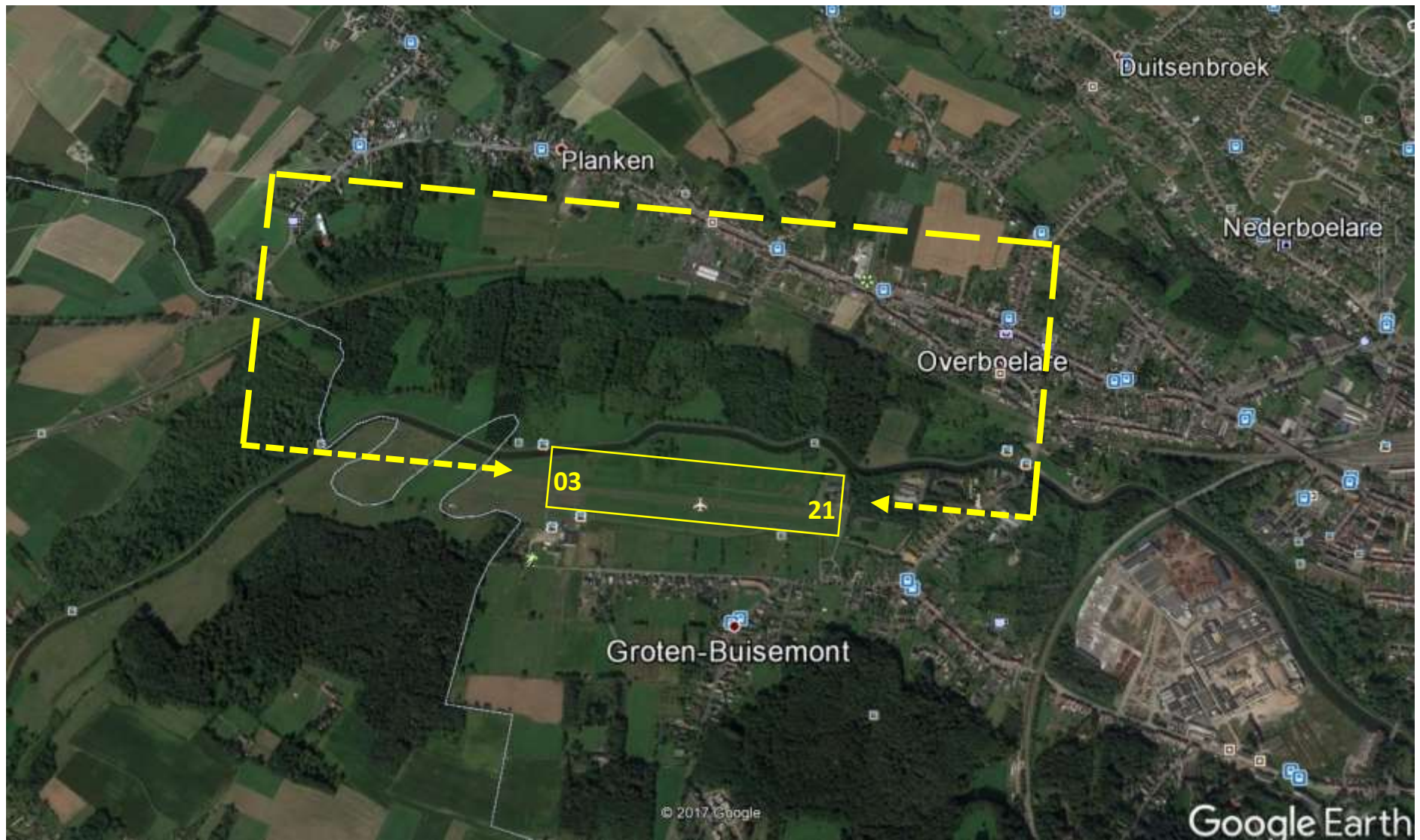
## EBGG AD 2.2 AERODROME GEOGRAPHICAL AND ADMINISTRATIVE DATA

1	ARP coordinates	504520N 0035150E
	Site of ARP at aerodrome	
2	Direction and distance from (city)	
3	Elevation / reference temperature	48 FT / INFO not AVBL
4	Geoid undulation at AD ELEV PSN	148 FT
5	Magnetic variation / annual change	INFO not AVBL
6	Name of AD operator	Vlaams Zweefvliegcentrum Phoenix VZW (VZP)
	Address	Veldekensdreef 8 9500 Geraardsbergen (Overboelare) BELGIUM
	TEL	+32 (0) 54 42 19 58 (AD)
	FAX	+32 (0) 54 42 19 58 (AD)
	Email	NIL
	AFS	NIL
	Website	INFO not AVBL
7	Types of traffic permitted (IFR/VFR)	VFR
8	Remarks	The use of the aerodrome is subject to prior permission from the operator.

## EBGG AD 2.12 RUNWAY PHYSICAL CHARACTERISTICS

RWY designator	True BRG	Dimensions of RWY (M)	Strength (PCN) and surface of RWY and SWY	THR COORD		THR ELEV and highest ELEV of TDZ of precision APCH RWY
				RWY end COORD		
				THR geoid undulation		
1	2	3	4	5		6
03	031°	500 x 18	2 000 KG GRASS			
21	211°	500 x 18	2 000 KG GRASS			

TRAFFIC PATTERN RWY 03 & 21



TAKE-OFF PROCEDURES RWY 03 & 21

